

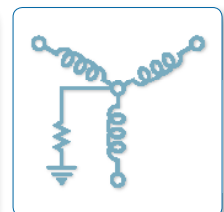
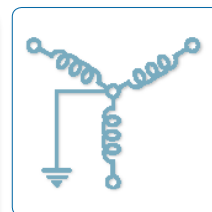
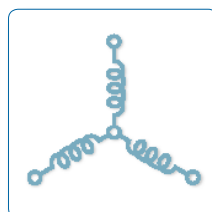
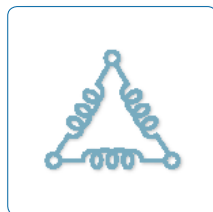


Unparalleled Protection

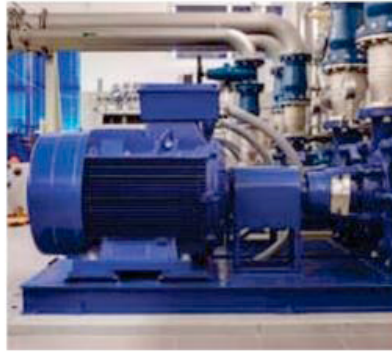


ZORC® TRANSIENT SURGE SUPPRESSOR

BROCHURE



May, 2021



The ZORC is a unique, high frequency transient overvoltage surge suppressor for the protection of motors, transformers and generators from steep wave-front, short rise-time, high magnitude, spikes, surges, other transient voltages and circuit switching.

Key Features:

- Saves money by eliminating production downtime due to insulation failures
- Protects motors, generators and transformers throughout their service life
- Eliminates multiple pre and re-strike transients associated with vacuum and other switchgear
- Standard and intrinsically safe models available
- Three and single phase

Product Functions:

- System Voltage: 400 V to 40 kV
- Transient protection: 0.1 to 0.2 micro seconds range
- Special compact versions that can be fitted within most motor/transformer terminal enclosures or switchgear panels

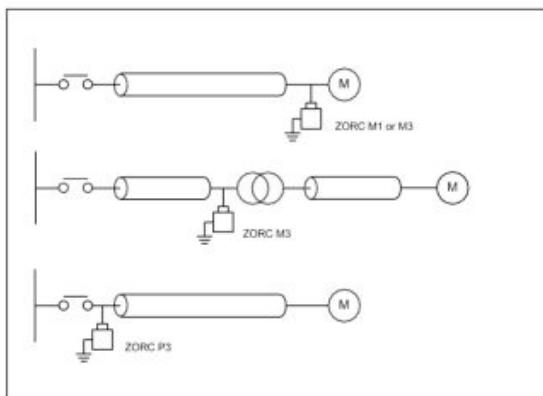
Applications:

- Fans
- Compressors
- Crushers
- Motor-generator sets
- Conveyors
- Generators
- Induction and arc furnaces
- Pumps
- Mills
- Refrigeration machines
- Mine winders
- Mini and mobile substations
- Power station auxiliaries
- Dry type transformers

Installation:

ZORC™ surge suppressors may be installed in any orientation (including upside down) on the machine side of the associated medium voltage motor/generator/transformer switch, in the following positions (in order of preference from a surge protection point-of-view):

Preferred connections of ZORC™ Surge Suppressors:

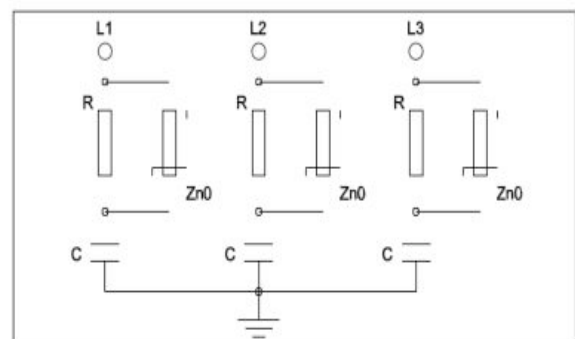


- In the motor/generator/transformer terminal box, connected from each phase to earth•
- Cabled to the motor/generator/transformer terminal box via a 3-core cable (25 mm minimum), plus earth conductor (in accordance with local regulations)
- In line with the motor/generator/transformer supply cable, shunt connected from each phase to earth
- In the associated motor/generator/transformer switch panel, connected from each phase to earth
- Convenient mounting brackets or clamps are provided

Overall mechanical dimensions - guide:

Model	Height	Width	Depth
LVZ-400/550/1100	225	224	90
M3C-3kV/4.2kV/6.6kV	242	280	116
M3/P3-3.3kV/4.2kV/6.6kV/7.2kV	444	428	138
M1-11kV	489	535	105
M3/P3-11kV	489	535	105
M1-12.5kV/13.8kV	489	535	120
M3/P3-12.5kV/13.8kV	489	535	120
M1-15kV	522	428	105
M1-22kV	762	429	138
M1-25kV/33kV/36kV/40kV	1526	440	440

The ZORC™ surge suppressor is a unique voltage and frequency dependent cable- terminating network comprising of, capacitors, resistors and Zinc Oxide (ZnO) non-linear arresters.





Unparalleled Protection



www.i-gard.com

Phone: 905-673-1553
Toll Free: 1-888-737-4787

Fax: 905-673-8472
support@i-gard.com

www.strike.co.za

