

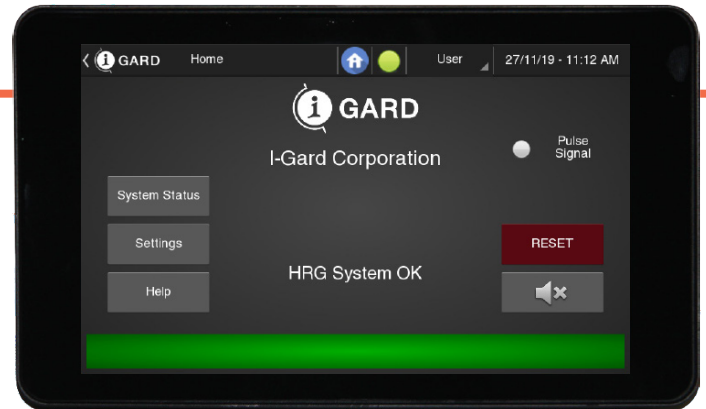
# IC<sup>2</sup>

The IC<sup>2</sup> is a user friendly touchscreen display module that provides interfacing capability with I-Gard's relay modules - such as the DSP ground fault detection system, replacing the DSP-DM module. The IC<sup>2</sup> can be front panel mounted and fits the DSP cut-out providing the ability to easily retrofit I-Gard's existing DSP modules.



## UNIQUE FEATURES

- ✓ Admin and user mode allowing for restricted access
- ✓ Easy pulse activation via a one touch button
- ✓ Easy accessible troubleshooting features on device
- ✓ Ethernet and serial communication available
- ✓ Feeder modules can be configured with descriptive names
- ✓ Configuration settings can be uploaded via USB for fast and easy implementation



**FAULT CLEARED**

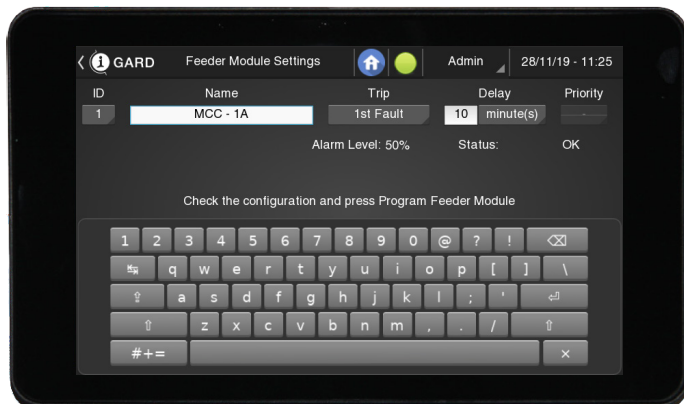
**FAULT DETECTED**

## BENEFITS OF IC<sup>2</sup>

The IC<sup>2</sup>'s simple yet intuitive interface creates a seamless user-experience by guiding users through its advanced features such as [custom feeder naming](#), [event-logging capabilities](#), [MODBUS TCP communication](#), [ability to add arc detection module DSP-ADM](#) and even [fault trend analysis](#).

In the case of a ground fault occurrence, the feeder naming function allows users to [quickly and safely locate the fault](#) and clear it. All while being protected by the DSP-ADM Module from the arc flash hazard.

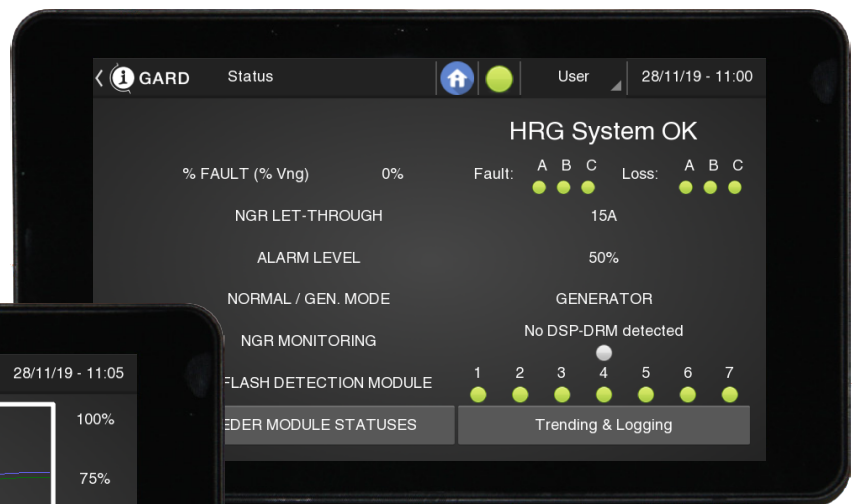
### IMPROVED FEEDER MODULE SETUP



### MODBUS TCP COMMUNICATION



TRENDING SCREEN



STATUS SCREEN

## TECHNICAL SPECIFICATIONS

Screen Size	7" Touchscreen
Touchscreen Technology	10-point multi-touch touchscreen
Resolution	800 x 480 RGB LCD Display, 24-bit colour
Vertical Viewing Angle	130°
Horizontal Viewing Angle	140°
Processor	Broadcom BCM2837B0, quad-core A53 (ARMv8) 64-bit, 1.4GHz
Memory	1GB LPDDR2 SDRAM Expandable non-volatile memory – 32GB
Connectivity	Gigabit Ethernet and 4x USB
Communication	MODBUS TCP, MODBUS RTU