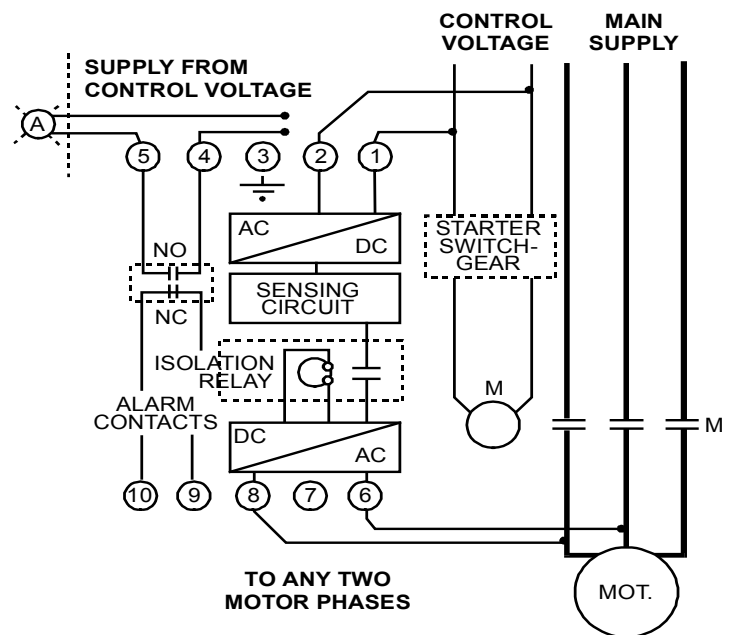


iM800

iM800 insulation monitors are intended for use in ships and the range of insulation resistance covered: 3 MΩ to 0.5 MΩ was chosen to meet the needs of the marine environment, which is more severe than industrial environments.

The monitors provide a visual alarm indication, with contacts for external alarm and other functions and are intended for use with machines to 600V AC or DC.

Connection Diagram:



Fast and easy installation

Low monitoring voltage for personnel safety

Small footprint DIN Rail mounting

Integral self-test capability

Completely automatic in operation

Early warning of insulation issues

LED local alarm

Optional automatic reset mode

Solid state circuitry

Contacts provided for local alarm and PLC connection

Technical Specifications:

Maximum Line Voltage	600 AC/DC
Supply Voltage*	115, 230V AC, 440V AC, 50/60HZ
Power Requirements	3VA
Factory Set Point**	3, 1 & 0.5 MΩ
Isolation Voltage	200 - 600V AC/DC
Isolation Time	0.5ms
Contact Rating	5 Amp., 250V AC resistive
Dimensions (mm)	45 x 68 x 112
W x H x L (in)	1.77 x 2.67 x 4.4
Weight (kg)/(oz)	0.27/9.5

* DC and 400Hz supply voltage units available – contact factory

** For other set points, consult factory

- Maximum short circuit current 25 microamps
- Temperature: Operating -20°C to +50°C;
Storage -40°C to +100°C
- Environment: Maximum 95% relative humidity, non-condensing

Application:

iM800 insulation monitors are designed to provide safe monitoring of electrical insulation integrity within the marine environment. Easily installed to monitor motors in any area of the vessel where electrical machinery may sit idle but must be effective on demand, e.g. the lower platform, deck machinery and even standby generators.

iM800 proactively eliminate grounds on the ship's electrical system before they occur, since most grounds occur when wet motors are started - and iM800 monitors detect wet motors whilst they are still idle, a task beyond the capability of any system ground indicator.

iM800 warns employees of insulation degradation, before motors (or generators) with deteriorated insulation are in immediate danger of failing on start up. This allows preventative maintenance to be scheduled when convenient, thus eliminating failure and the need for an emergency replacement or rewind.

The seriousness of the situation can be found by using the three alarm levels provided (3, 1 and 0.5 MΩ), to determine the speed of the insulation deterioration. Control power requirement is 115, 230 or 440V, 50/60 Hz., 3 VA.



www.i-gard.com

7686 Bath Road
Mississauga, Ontario Canada L4T 1L2
Phone: 905-673-1553 Fax: 905-673-8472
Toll Free: 1-888-737-4787
sales@i-gard.com