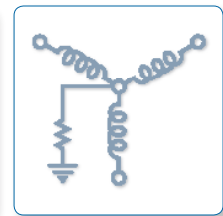
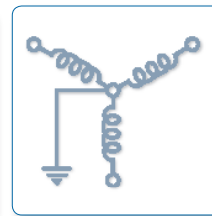
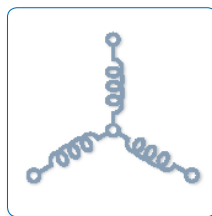
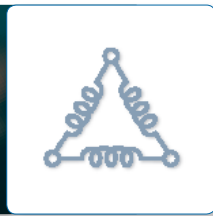
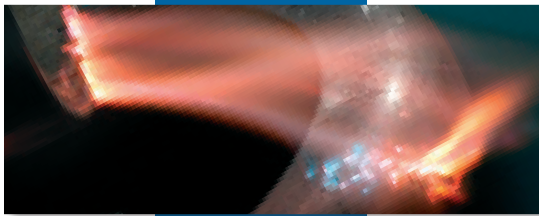




Unparalleled Protection

iM600D

INSULATION MONITOR



unparalleled protection

iM600D

The iM600D device continuously monitors the insulation resistance of idle machines to provide early warning of insulation deterioration. It withstands test voltages up to 1000V.

1. INSTALLATION

1. Disconnect power from the starter unit.
2. Install the mounting bracket close to the enclosure hinges using the screws supplied. Clip the monitor securely to the mounting bracket.
3. If required and regulations permit, install the long life flashing alarm light (supplied) on the starter enclosure front panel close to the hinges and affix the self-adhesive warning label around the lamp.
4. Connect control voltage to the unit (terminals 1 & 2 for 120V, 1 & 3 for 220V). Connect terminals 6 & 8 to any two phases on the load side of the main contactor. Connect terminal 7 to ground.

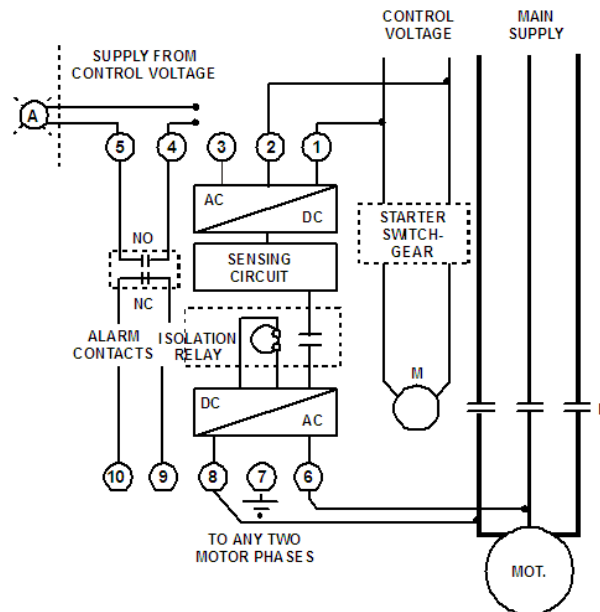
Use terminals 9 & 10 for start prevention (if required) and terminals 4 & 5 for local or remote alarm operation.

2. INITIAL TEST PROCEDURE

1. Ground one of the motor phases momentarily with the supplied Test Resistor
2. The Red LED should light and the external alarm circuit be activated after a delay of 8 – 10 seconds.
3. Reset the monitor with the RESET button.
4. Repeat the procedure with the other two phases.
5. Start the motor. If the Red LED lights while the motor is running, check connections to terminals 6 & 8.

Monitoring is now automatic and may be verified at any time by pressing the TEST button.

3. CONNECTION DIAGRAM MODEL iM600D



NB. If the motor is wired for start prevention it will be tripped out by the test.

Alarm level switch: Recommended setting is 3 MΩ; however if still in alarm at 0.5 MΩ, call for service!

4. SPECIFICATIONS

Maximum Power	3VA
Control Settings	115/220V AC \pm 20% 50/60 Hz \pm 10%
Maximum Line Voltage	600V AC/DC
Measuring Voltage	24V
Measuring current	50 μ A max
Isolation Time	0.5 milliseconds
Contacts Rating	250V 5A AC resistive
Dimensions	4.4" x 1.77" x 2.67" 112 x 45 x 68 mm

Available for DC control, 400Hz and different settings – consult factory

NOTE: DISCONNECT CONTROL POWER FROM THE STARTER ENCLOSURE IF HIGH VOLTAGE INSULATION TEST IS REQUIRED.

5. I-GARD PRODUCTS

For more information or for a complete list of I-Gard Products, please contact I-Gard.



FALCON
Optical Arc
Protection System



VIA
Voltage Alarm Indicator



mGARD
Ground Fault
Relay



STOPLIGHT
High Resistance
Grounding System



GEMINI
High Resistance
Grounding System



SLEUTH
High Resistance
Grounding System



FUSION
High Resistance
Grounding System



SENTINEL
High Resistance
Grounding System



MGFR
Ground Fault
Relay



DSP OHMNI
High Resistance
Grounding System



SIGMA
Ground Fault Relay
Resistor Monitor



GCHK-100
Mining Relay

unparalleled protection



7615 Kimbel St., Unit 1
Mississauga, Ontario
Canada L5S 1A8

Phone 905 673.1553
Toll Free 1 800 737.4787
Fax 905 673.8472
e-mail: sales@i-gard.com
www.i-gard.com